

## WING VIEWS FOR iFDG A319/A320/A321

It is good practice to **back up** your original panel folder/s. Done that? Good! Keep it somewhere safe!

To see the wing views you are going to get, go to page 6 in this document!

### Acknowledgements

I would like to thank **iFDG** for their wonderful A32X series planes! Also I would like to thank **Avsim** for letting me upload this on their servers & for making available so many awesome free downloads. Thanks also to all the freeware developers out there who make all their hard work available for all of us to use in our flight simulators. The simmers are grateful. And last but not least – thanks to all the other users on the forums who are always ready to help!

### Problems? Errors?

If you notice any errors in these instructions, if you have any advice or if you want to say anything – don't hesitate to contact me either by email or on the iFDG forums. My email address is:  
nevin@scandinavica.com

### Type-specific wing views

There are **THREE** different wing-view inserts here for the iFDG A319, A320 & A321. Of course you can use any of the views with any of the three planes but I made three different ones [to adjust for the number of seats in the 3 different models](#).

### Location

**The wing views are contained within the Notepad file that comes with this download.**

### Two sets of Instructions

There are **two** sets of instructions here. The first set is the quick-install for people who know all about the FS9 file structure. The second set is just in case the wing-views didn't work & for those who need some guidance on going about changing the panel.cfg. This is my first ever upload for FS9. Please feel free to email me (or use the iFDG & Avsim forums) to tell me about any mistakes in these instructions.

### Numpad Views

1. Captains rear-left wing view (default)
2. **Passenger view** : entire left engine and wing leading edge
3. First Officer's rear-right wing view (default)
4. **Passenger view**: left wing trailing edge from last seat
5. Look down (default)
6. **Passenger view**: just behind the right wing trailing edge
7. **Passenger view**: beside the left engine pod
8. Main panel (default)
9. **Passenger view**: sitting on top of the right wing

---

## QUICK INSTALL

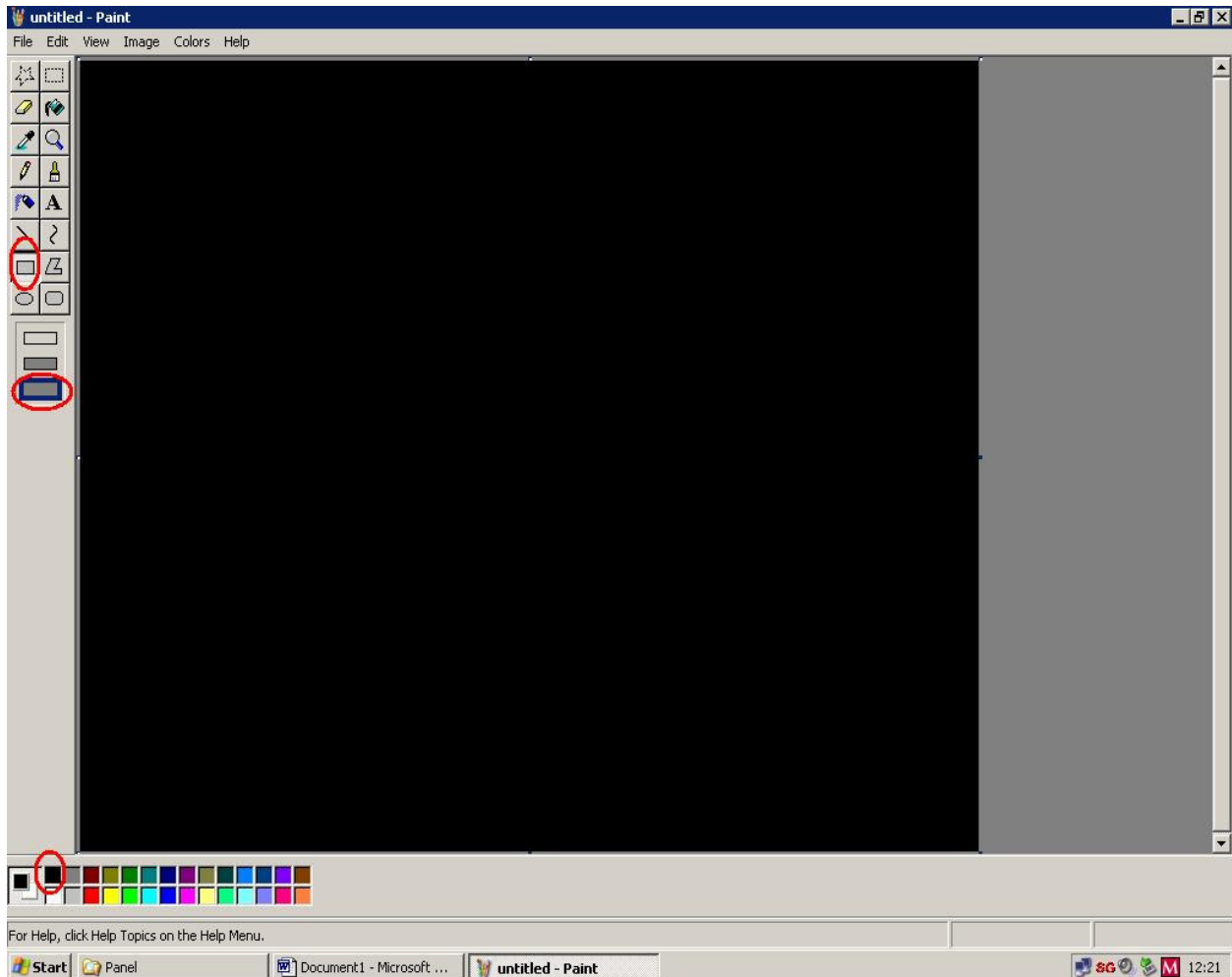
1. **Open the panel.cfg of the plane you want to insert the wing views in. Look for the heading [VIEWS] and copy-paste the wing views of your choice under that [overwriting](#) your existing views.**
2. **Done! Go fly!**

## DETAILED INSTALL

(NP = numpad, so NP2 means “the #2 key on the number pad”)

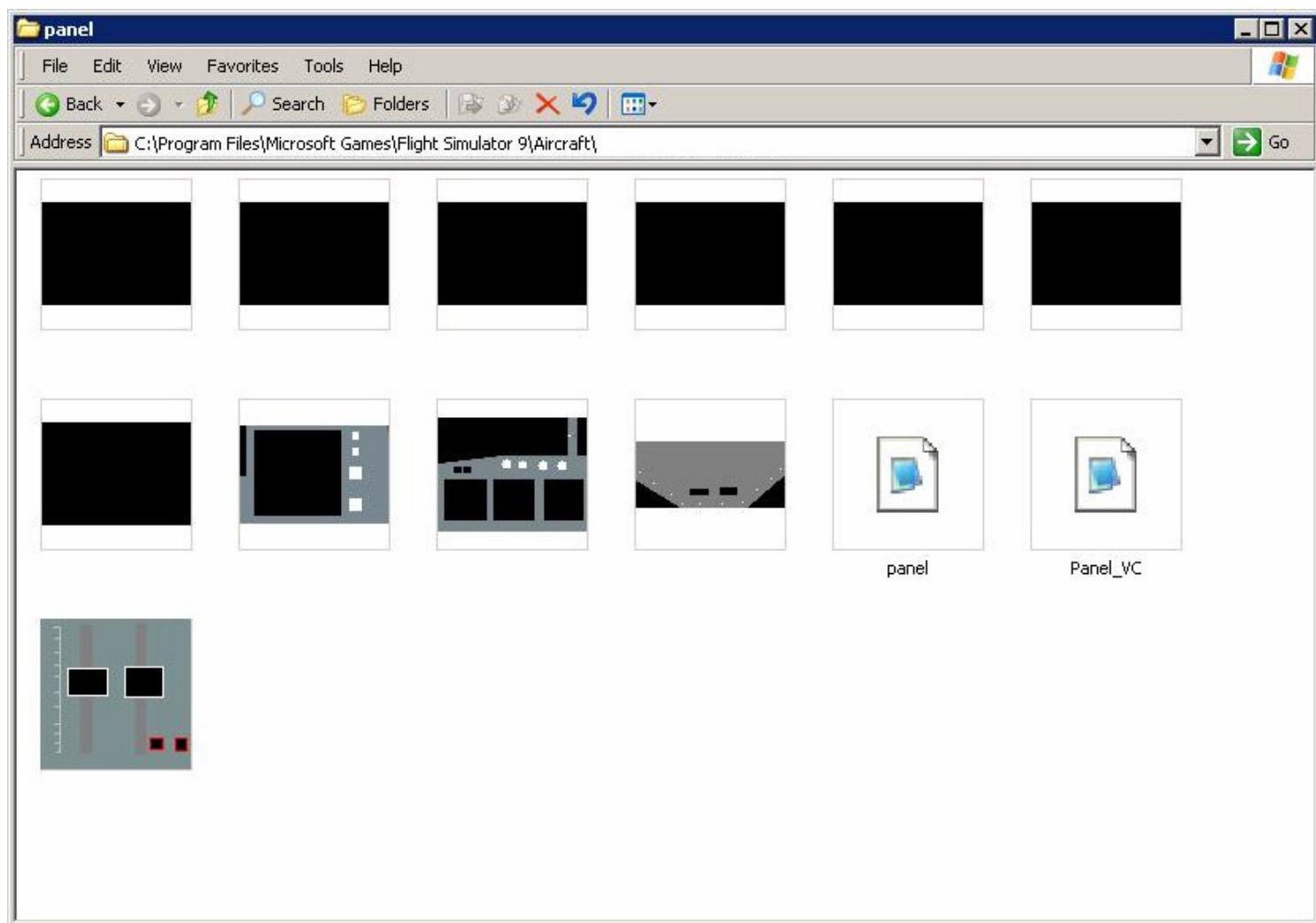
Before inserting the new wing-views into the panel.cfg there is something simple you have to do. If you don't do this you can still have these wing views but they will be obscured by the panel bitmaps (if you have them). Ready? Ok let's get you some nice wing views!

1. Navigate to your panel folder using Windows Explorer
2. Choose “thumbnail” view so you can see all the cockpit bitmaps easily
3. Open MS Paint
4. Now read this carefully: You are going to change the cockpit-view bitmaps **ONLY**. By that I mean those bitmaps that appear when you press for example NP4 to look left and you see that picture of the cockpit frame, window sill etc. Or you might press NP2 to look behind you and you will see a photograph of a cockpit door taken from a real A320. It is THESE pictures that you are going to alter. Remember – **do NOT** alter the main panel or pedestal pictures!
5. You are going to drag these cockpit bitmap pictures one by one into MS Paint and make them **black** using the filled rectangle tool, like this:



6. Save the altered bitmaps USING the **ORIGINAL NAMES**

7. When you are done the panel folder in your Windows Explorer should look like this:



All the side-view, forward-view, rear-left view etc. bitmaps have been blacked out. You can see that the bitmaps needed for flying the plane (throttles, main panel, overhead panel etc.) have **not** been touched.

The reason you are doing this is because FS9 treats black as transparent when you use the view keys from the cockpit.

Ok now you are ready to insert the wing views!

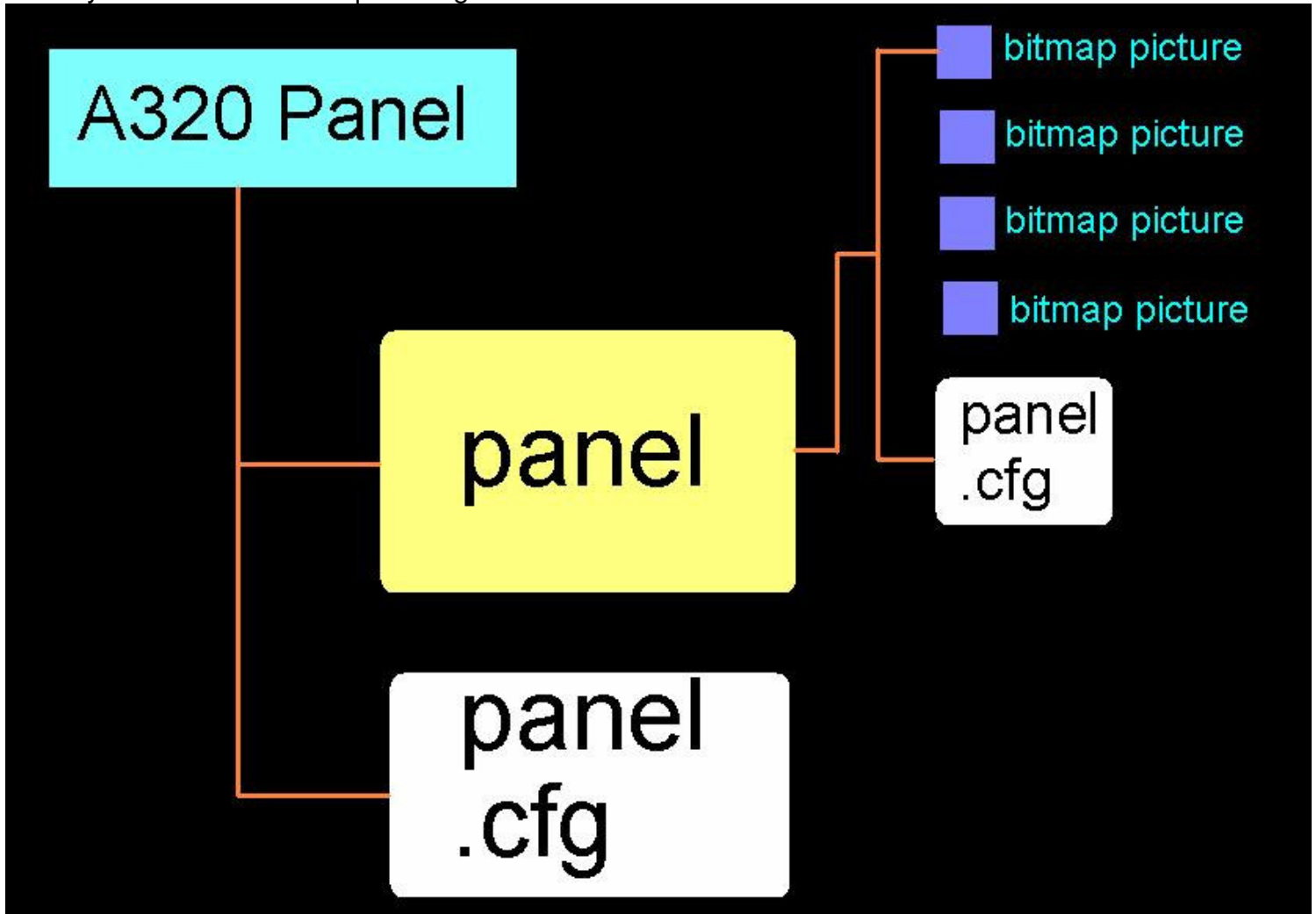
Instructions below are for aliased panels & after that are the instructions for non-aliased panels:

## INSTALLING THE WING VIEWS FOR ALIASED PANELS

If you have aliased panels then your panel folder will have two things under it:

- The panel folder itself (containing the panel bitmaps and panel.cfg)
- Panel.cfg

So you should have **two** panel.cfg's like this:



1. Open up one of the panel.cfg's of the plane you want to insert the wing views in using Notepad
2. Look for the section with the heading: [VIEWS]
3. Copy-paste the wing views under that heading overwriting your existing views
4. Save the panel.cfg & close Notepad
5. Point to the panel.cfg you just saved (do not open it, just select it) & press **CTRL+C**
6. Now go to where the other panel.cfg is and press **CTRL+V**. Say "yes" to overwrite.
7. Save the panel.cfg
8. Done! Go fly! Enjoy the views!

## INSTALLING THE WING VIEWS FOR NON- ALIASED PANELS

If you keep all your planes each with their own panel folder:

1. In Windows Explorer open the folder of your plane
2. Open the panel folder
3. Open the panel.cfg in Notepad
4. Look for this heading: [VIEWS]
5. Copy-paste the wing views under that overwriting your existing views
6. Save the panel.cfg
7. Repeat steps 1-5 for each plane **OR** just copy the panel.cfg & paste it into the other plane's panel folders saying YES to overwrite (faster method)
8. You are done! Go and fly your Airbus!

I **highly recommend** using aliasing! It saves you **lots** of disk space and it is so easy to make changes and backups since one panel can serve a thousand planes if you want it too! See the picture below to see the advantages of aliasing your panel. Once you make a change to an aliased panel it is applied to **ALL** planes using it in one swoop! Cool! ☺

